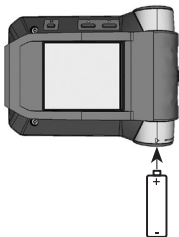


User Manual

s.QUAD Voice

1. Introduction



Congratulations on your new Swissphone receiver! When you purchased the new s.QUAD, you chose a top-range device. The s.QUAD delights with its optimum combination of user-friendly design, high carrying comfort and top quality. It offers easy operation via four buttons and a graphical display.

The s.QUAD can be custom configured. For this reason, some of the functions described in this brief operating manual may be missing on your device.

This brief operating manual provides important information that will help you get the most out of your device. Always keep this manual ready to hand.

We wish you success in using the s.QUAD.

2. Getting started

Insert power source

The s.QUAD works with either a dry cell battery or a rechargeable battery. Insert the power source into the s.QUAD, making sure that you observe correct polarity. The s.QUAD will turn on automatically. A functional test is then performed. After the test, please specify whether you have inserted a dry cell battery or a rechargeable battery. The device is now ready for operation. Further information on the power supply can be found in the chapter 'Charging the battery/power supply'.

Turn on

To manually turn on the s.QUAD, you must press and hold one of the four buttons until the start screen or start text appears on the display. The home screen is visible after a few seconds and the s.QUAD is ready for operation.

3. Button function and navigation

BACK navigation button

- Scroll backwards in the menu
- Change settings
- Display the start screen or start text

FORWARD navigation button

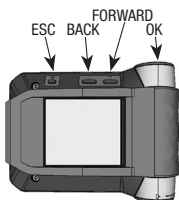
- Scroll forward in the menu
- Change settings
- Display the secondary menu by holding the button

OK confirmation button

- Read messages
- Confirm and acknowledge alert
- Confirm menu selection
- Call up the last message received

ESC button

- Leave the current menu level
- Go to the home screen by holding the button



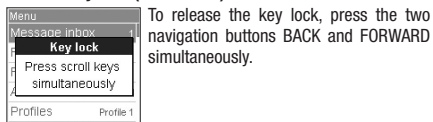
Open user menu

The BACK and FORWARD navigation buttons allow you to switch from the home screen to the user menu. Press the FORWARD button to navigate to the next menu item, the BACK button to navigate back to the previous item. To confirm a selection you have made or a changed value, press the OK button. Each press of a button activates the backlight. By pressing the 'OK' button from the home screen, you can call up the last received message from the memory.

Back to home screen

Press the ESC button to go to the next higher menu level. If you hold down the ESC button for two seconds, you return from the submenu to the home screen. If you do not press any of the buttons for a pre-configured time interval, the s.QUAD automatically returns to the home screen.

Release key lock (if activated)



To release the key lock, press the two navigation buttons BACK and FORWARD simultaneously.

Start-up image/Start-up text

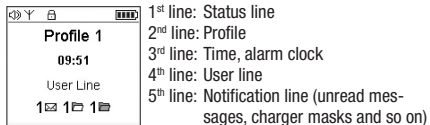
If you hold down the BACK navigation button in the home screen, the start-up image or start-up text appears.

Secondary menu

If you hold down the FORWARD navigation button in the home screen for two seconds, you reach the secondary menu (only if configured in the menu). Functions that are seldom used can be placed on a second menu level (secondary menu) in order to declutter the main menu. When you leave the secondary menu, the device automatically returns to the start screen.

4. Display

The home screen is divided into five sections:



1st line: Status line
2nd line: Profile
3rd line: Time, alarm clock
4th line: User line
5th line: Notification line (unread messages, charger masks and so on)

Status line

The following symbols may be displayed in the status line:

Alert type		Monitor alert
		Loud alert
		Quiet alert
		Ascending alert
		Discrete alert
		Silent alert
Out of range display		No reception of alert messages
Bluetooth		Bluetooth turned on, but not connected with a device
		Bluetooth is connected with a device
Key lock		Key lock is activated
Battery level		Display Battery full, ¾, ½, ¼
		Flashing Charge the battery!

Profile display

This line indicates the currently selected profile.

Time/alarm clock

This line shows the time. You can also see whether the alarm clock is activated.

Alarm clock		Alarm clock function is activated
-------------	--	-----------------------------------

User line

A user-specific text is displayed.

Notification line

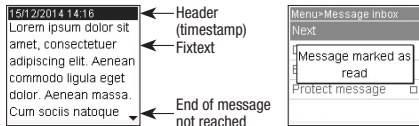
This line shows the charger mask and the programming mask. If there are unread (unacknowledged) messages in the memory, the folder information is displayed.

Folder information		Number of unread messages in the message inbox
		Number of unread messages in message folder A
		Number of unread messages in message folder B

5. Processing alerts/messages

Receive and read new messages

When your s.QUAD receives a message, an alert occurs through sound, vibration and illumination of the OK button, followed by the voice announcement. By pressing the OK button, you can stop the alert. The header (timestamp) shows the message date, message time and address name. If you now press the BACK navigation button, the header is displayed in full. A predefined 'Fixtext' may be displayed with each alert. In case a Hybrid-Alert including text was received, the message-text follows the fixtext. The downward-pointing arrow indicates that there is more text.



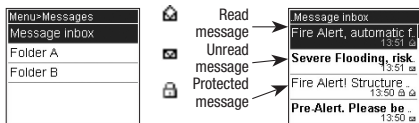
You can use the OK button or the FORWARD navigation button to scroll to the end of the message. The message is marked as read as soon as you reach the end.

Listen to announcement again

To listen to the announcement again, you simply need to press the OK button from the home screen. Playback of the announcement will begin automatically. Announcements can also be played directly from the message inbox, depending on the configuration.

Message storage

The messages are stored in the message inbox or in the appropriate folder. They are stored chronologically in a list. Unread or protected messages are marked in the list. Unread messages are also indicated in the home screen.



Protect/delete messages

The 'Protect message' function allows you to protect a read message. To delete a message, select 'Delete message'. The 'Empty folder' function lets you delete all messages in the list.

Lock messages or folders with a PIN

The 'Lock message' function allows you to lock a message. To be able to read a locked message, you must first enter the corresponding PIN code. Similarly, you can use the 'Lock folder' function to protect an entire folder with a PIN code. You can also specify that messages in a folder should be automatically locked after a timeout. After this timeout, you will need to enter the corresponding PIN to be able to read these messages.

Alert reminder

If your device was configured to use an alert reminder, you will be reminded of unread messages after the preset time. The alert reminder is turned off as soon as you have read all messages.

6. Main menu

When you press the FORWARD navigation button, the device switches from the home screen to the main menu. You can use the FORWARD and BACK navigation buttons to navigate to the individual menu items. To open a selected menu item, press the OK button. To leave the main menu or to go to the next higher menu, press 'ESC'.

Main menu

- **Alerting** See the chapter 'Alerting'
- **Switch off** Switch off device
- **Settings** This menu contains various settings for the device (see the chapter 'Settings').

- **Read last/unread message** The last message or all unread messages can be read at any time by pressing the OK confirmation button.

- **Messages** Here you can manage the message folders (message inbox, folder A, folder B).

- **Message inbox** Manage or read messages (naming may differ)

- **Folder A, B** Manage or read messages in the message folders (naming may differ)

- **Profiles** Selection of one of the pre-programmed profiles

The menu can be freely configured using the programming software. Therefore, your menu on the device may differ considerably from the menu described here. Details regarding the programming of the various menu items can be found in the programming software manual.

7. Alert

You can select the following types of alert in the 'Alerting' menu:

- **Loud** The alert pattern is played based on your programming. The alert pattern is played loudly.
- **Quiet** The alert pattern begins quietly and gradually gets louder.
- **Ascending** The alert is preceded by activation of the display backlight and vibration for ten seconds; the alert pattern is then played quietly (once).

- **Silent** To alert you, the display backlight and vibration are activated for ten seconds. The device is totally mute; furthermore, no key clicks are audible.
- **Monitor** The alert occurs as a Loud alert. Whenever radio communication is detected, it may be heard on the loudspeaker.

The following table shows the various types of alert:

Alert type	Symbol	Alert	Alert for a priority message
Monitor		Standard signalling	Standard signalling
Loud		Standard signalling	Standard signalling
Quiet		Standard signalling - quiet	Crescendo volume
Ascending		Crescendo volume	Crescendo volume
Discreet		10-second vibration, quiet sound	10-second vibration, crescendo volume
Silent		10-second vibration	10-second vibration, crescendo volume

- Sound as defined
- Quiet
- ▒ Medium volume
- ▢ Vibration

Priority messages are signalled at the end always with the programmed volume. s.QUAD in the charger: – Vibration is not activated. – The alert type can be overridden using the charger mask.

8. Settings

The menu items under Settings depend very much on the configuration of the s.QUAD.

- **Battery Confirmation tone** Selection of the inserted power source. You can turn on or off the confirmation tone that is played when a change is applied.
- **Bluetooth** Settings for the Bluetooth 4.0 interface (Low Energy)
- **Date and time** You enter the date/time by repeatedly pressing the FORWARD and BACK navigation buttons. If the correct number is shown, press the OK button to confirm.

Detailed status

- State display of the inserted power source
- Five-level display of the signal strength at the current location
- Last signal: signal strength of the last transmission in the network
- Last message: signal strength of the last received message

Display of signal strength (RSSI)	No signal present (no reception)
		Best signal strength

- Bluetooth connection status
- Device information (serial number and current firmware)

Backlight

You can turn the automatic backlight on or off.

Out of range alarm

You can turn the acoustic warning of the out of range alarm on or off.

Contrast

You can set the display contrast between One (light) and Eight (dark).

Message font

Select one of the various fonts for the message text.

Melodies

Select the address. After pressing the OK button to confirm, you can use the FORWARD or BACK navigation button to change the alert melody.

Alert reminder

Select the type of alert reminder: flashing and/or periodic beeping.

Language

You can select the menu language.

Key lock

You can turn automatic activation of the key lock on or off.

Key click

You can turn the key click on or off. A short vibration can be used to signal that the end of a menu has been reached. You can turn this function on or off.

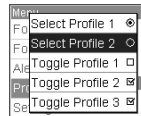
Alarm clock

You can set the alarm time and activate or deactivate the alarm clock.

Vibration

You can activate or deactivate vibration.

9. Profiles



Select the 'Profiles' menu. The s.QUAD has two types of profile: select profiles and toggle profiles. Whilst only one of the select profiles can be activated at any one time, multiple toggle profiles can be simultaneously active. You can

turn the toggle profiles on or off, irrespective of other profiles. You can switch over the select profiles using the radio buttons . To turn the toggle profiles on or off, use the check boxes .

10. Power-on PIN lock

If the Power-on PIN lock is configured in your s.QUAD, you will be prompted to enter the PIN code when starting the device for the first time.

Use the FORWARD and BACK navigation buttons to select the individual numbers of the PIN code. Confirm the numbers by pressing the OK button.

If you enter an incorrect PIN code ten times in succession, the device will be locked. In this case, the only way to unlock it is by using the programming software.

11. Alarm clock

Set alarm clock



Select the 'Alarm clock' menu. Use the FORWARD and BACK navigation buttons to turn the alarm clock on or off. You can also use the FORWARD and BACK navigation buttons to set the alarm time. Press the OK button to confirm.

The activated alarm clock function is displayed with the corresponding symbol in the home screen.

Acknowledge alarm

When the alarm clock sounds, the following selection appears: Snooze or Stop. Selecting 'Stop' will end the current alarm call. However, the alarm clock remains activated and will wake you on the next day. Selecting 'Snooze' will initially turn off the alarm sound. However, it will sound again after five minutes.

The s.QUAD turns on with the alarm call

If the alarm clock is turned on and the s.QUAD is turned off, the s.QUAD will turn on at the alarm time and the alarm clock sounds.

12. Connection to an external device (for example, smartphone)

The s.QUAD has a Bluetooth 4.0 Low Energy interface that can be used to communicate with a remote terminal (smartphone). You can turn the interface on or off using the menu. If the interface is turned off, then the s.QUAD cannot be accessed via Bluetooth. The status of the Bluetooth interface is shown using a symbol in the status line.

Connection setup

As soon as the Bluetooth interface is turned on on the s.QUAD, a connection with the remote terminal (smartphone) is set up (advertising). The s.QUAD is visible on the remote terminal (smartphone) as soon as advertising has been successful.

Pairing

During advertising, the s.QUAD transmits an identifying name (s.QUAD and serial number) via the Bluetooth interface. You can now select the relevant s.QUAD on the remote terminal (smartphone).

You can change the identifying name on the remote terminal. This will not affect the serial number.

To prevent an inadvertent or unauthorised connection, a six-digit number (passkey) is displayed on the s.QUAD during connection setup and you must enter it on the remote terminal (smartphone).

The s.QUAD remembers the connection with the remote terminal. This applies even after the battery has been replaced. If the device wishes to connect with the s.QUAD again, the connection is established automatically. As long as the connection remains active, the s.QUAD will not be visible to other remote terminals (smartphones).

Terminating a connection

If you would like to connect the s.QUAD with another remote terminal (smartphone), you must first delete the active connection.

13. Charging the battery/power supply

During the charging process, the LED of the charger glows orange. A full charge takes approximately four hours. At the end of the charging process, the colour of the LED changes to green. The charge state and the name of the charging profile are shown on the s.QUAD display. The two charging profiles define the alert in a single device charger and in the multi-device charger.

Power source

You can use the following AA or LR6, AM3 or Mignon batteries as a power source:

- Dry cell: leak-proof alkaline dry cell battery
- Rechargeable battery: nickel-metal hydride rechargeable battery

Important:

- Alkaline batteries must not be charged. There is a risk of explosion!
- For safety reasons, only use original chargers from the accessory product range of Swissphone Wireless AG.
- Never expose dry cell batteries or rechargeable batteries to open flames. There is a risk of explosion!

14. Miscellaneous

Further information on this product and other products of Swissphone Wireless AG can be found at: <http://www.swissphone.com>

Safety notices

- This product must not be used in explosive environments.
- The device must not be opened.

Liability disclaimer

Swissphone Wireless AG gives no guarantee and accepts no liability in connection with the content of this document. The company reserves the right to make changes to the content of the s.QUAD Operating Manual.

This device complies with Part 15 of the FCC Rules. Operation is subject to the condition that this device does not cause harmful interference.

The device meets the provisions of the European directive R&TTE 99/05/EG ('Radio Equipment and Telecommunications Terminal Equipment').

You can request a copy of the declaration of conformity from info@swissphone.com.

